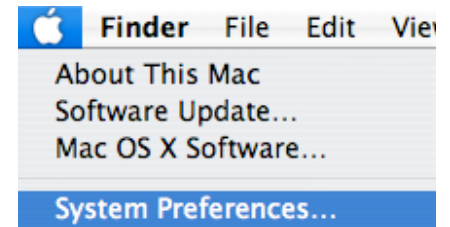


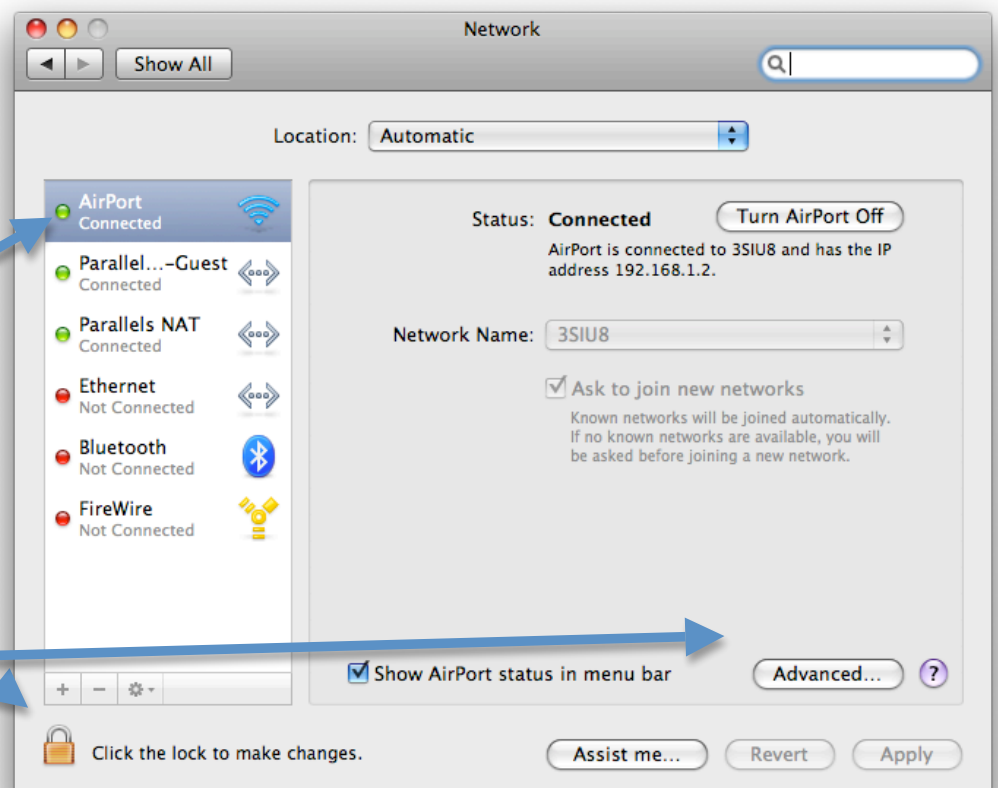
Making the TPS Airport Network Your Preferred Network

In order to insure that the TPS Airport Network will come up even after you disconnect from it, make it a preferred network.

1. Click on the Apple icon at the top left of your menu bar, choose "System Preferences" then click on the "Network" icon.



2. Choose Airport in the left column. Click the Advances button, and make sure the TPS Airport Network is in the list of preferred networks.



Unlock this system preference with the localadmin username and your password.

Click the Advanced button.

3. Drag and drop your Preferred Network to the top of the list

Make sure TPS N Airport Network higher than the TPS Airport Network.

Click the OK button.

Then click the Apply button.

